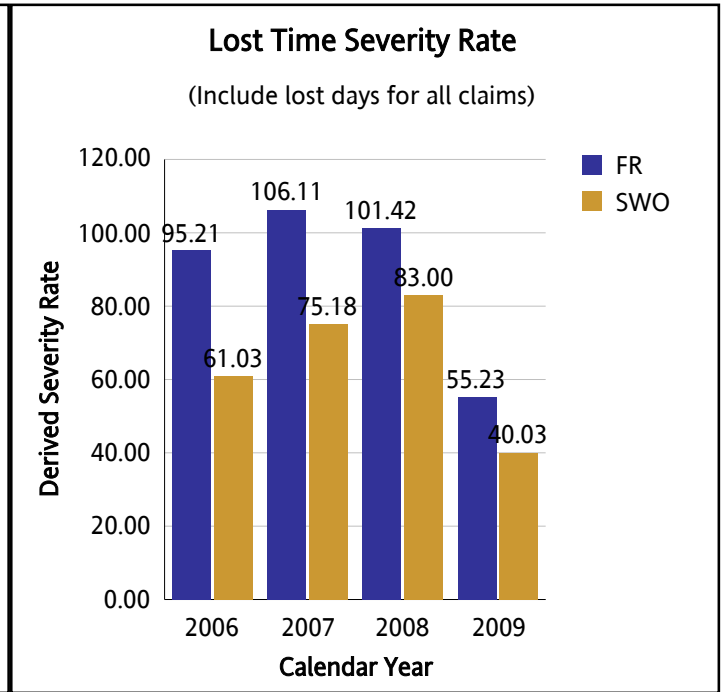
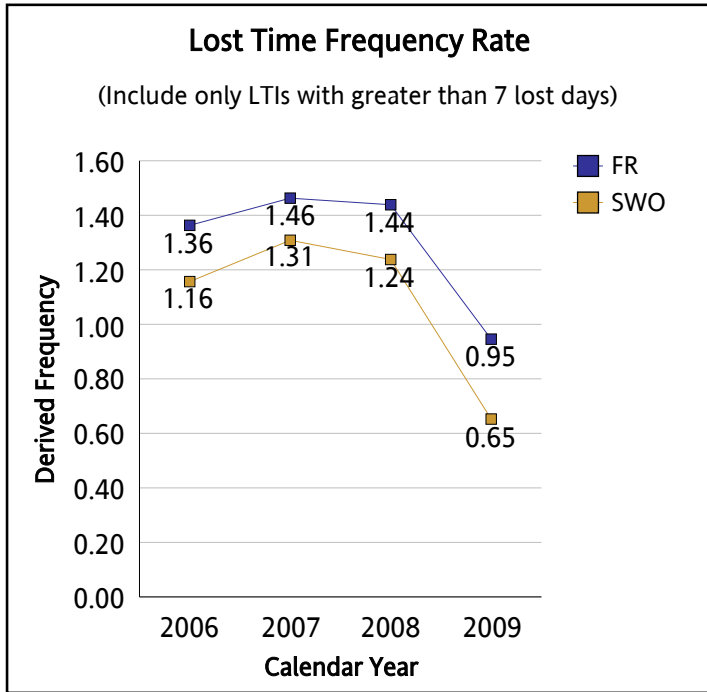


2009 SWO REPORT CARD



*FR - FORESTRY - without Safety Group Account data

*FR - FORESTRY - without Safety Group Account data

*If no Derived Frequency is shown on the Lost Time Frequency Rate graph, it means no claim with greater than 7 lost days is recorded from the database for that particular year at the snapshot date.

MOST COMMON INJURIES	MOST COMMON CAUSES
SPRAINS, STRAINS, TEARS UNSPEC.	FALL TO FLOOR, WALKWAY, OR OTHER SURFACE
BRUISES, CONTUSIONS	OVEREXERTION, N.E.C.
FRACTURES	BENDING, CLIMBING, CRAWLING, REACHING, TWISTING
CUTS, LACERATIONS	BODILY REACTION, N.E.C.
ABRASIONS, SCRATCHES	OVEREXERTION IN LIFTING (OBJECT) AND TURNING (BODY)
MOST COMMON BODY PARTS INJURED	MOST COMMON OCCUPATIONAL DISEASES
LOW(ER) BACK, UNSPECIFIED LOCATION	NERVOUS SYSTEM (INCLUDING SENSE ORGANS)
ANKLE(S)	RESPIRATORY SYSTEM
LUMBAR REGION	
WRIST(S)	
FINGERS, EXCEPT THUMB	

QUICK FACTS ABOUT THE GROUP

Calendar Year	Insurable Earnings Amount (\$)	Premium Amount (\$)	Total Firm Count	Derived Full Time Employee	Derived Hours Worked
2009	174,492,051.87	12,172,378.62	84	4,444.2	8,888,594

DATA DEFINITION:

Lost Time Frequency Rate - Total number of allowed claims (not including long latency occupational disease or third party motor vehicle claims) with greater than 7 lost days / Derived Hours Worked X 200,000

Lost Time Severity Rate - Total number of days lost for claims (not including long latency occupational disease or third party motor vehicle claims) for the accident year / Derived Hours Worked X 200,000

Derived Hours Worked - An estimated number of hours worked based on the insurable earnings divided by the average hourly wage for the rate group.

* The Days Lost value on this report does not take into consideration any modified earnings ie. 100% Lost of Earnings entitlement is used for all periods.